

Key: 10185

Town of Bourne - Fiscal Year 2024

12/18/2023 6:02 pm SEQ #: 10.419

LEGAL

Table with columns: CURRENT OWNER, PARCEL ID, LOCATION, TRANSFER HISTORY, DOS, T, SALE PRICE, BK-PG (Cert). Includes owner name ASHCROFT WENDY J TRS THE and parcel ID 47.1-39-0.

Table with columns: CLASS, CLASS%, DESCRIPTION, BN ID, BN, CARD. Includes multiple dwelling information and assessment details.

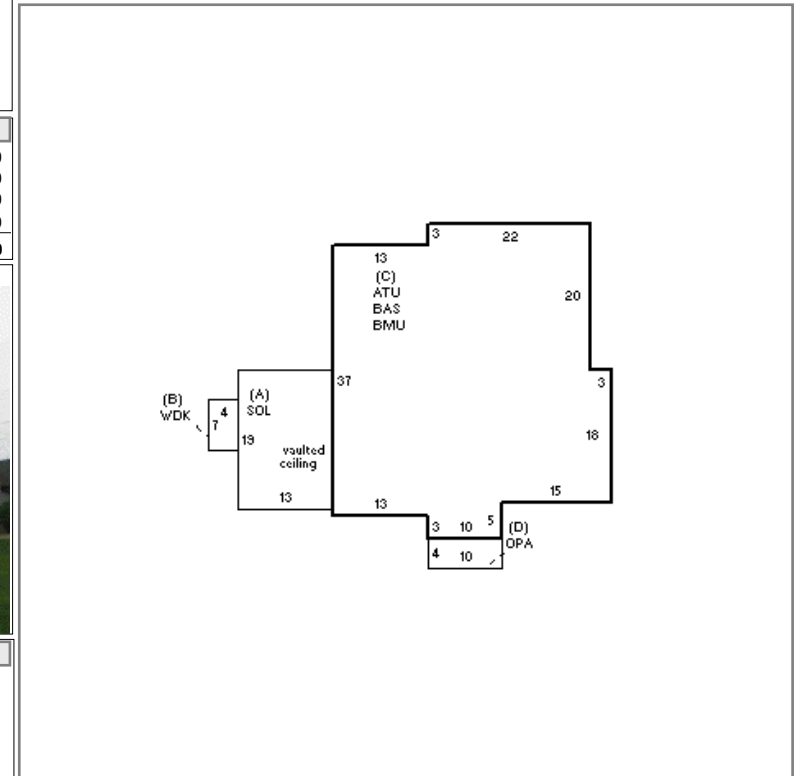
LAND

Table with columns: CD, T, AC/SF/UN, Nbhd, Infl1, N Index, ADJ BASE, SAF, Topo, Lpi, VC, CREDIT AMT, ADJ VALUE. Includes land area and assessment values.

Table with columns: TOTAL, 10,019 SF, ZONING, 1, FRNT, 0, ASSESSED, CURRENT, PREVIOUS. Includes assessed and current values for land, building, detached, and other.

DETACHED

Table with columns: TY, QUAL, COND, DIM/NOTE, YB, UNITS, ADJ PRICE, RCNLD. Includes details for DGF and PTD types.



BUILDING

Table with columns: BUILDING, CD, ADJ, DESC, MEASURE, 10/16/2013, TL. Includes building details like MODEL, STYLE, QUALITY, and FRAME.

Table with columns: BLDG COMMENTS. Includes a section for building notes.

INDING

Large table with columns: YEAR BLT, 2013, SIZE ADJ, 1.015, ELEMENT, CD, DESCRIPTION, ADJ, S, BAT, T, DESCRIPTION, UNITS, YB, ADJ PRICE, RCN, RCN, TOTAL RCN, 449.675, CONDITION ELEM, CD. Includes detailed building characteristics and capacity information.

