

Key: 10264

Town of Bourne - Fiscal Year 2024

12/18/2023 6:02 pm SEQ #: 10.500

LEGAL LAND

Table with columns: CURRENT OWNER, PARCEL ID, LOCATION, TRANSFER HISTORY, DOS, T, SALE PRICE, BK-PG (Cert). Includes owner info for TUCCI ALBERT A & MARY P TUCCI TR OF KENNEBEC.

Table with columns: CLASS, CLASS%, DESCRIPTION, BN ID, BN, CARD. Includes payment history for EXB-22-635.

Table with columns: CD, T, AC/SF/UN, Nbhd, Infl1, N Index, ADJ BASE, SAF, Topo, Lpi, VC, CREDIT AMT, ADJ VALUE. Includes totals for assessed, current, and previous values.

Table with columns: TY, QUAL, COND, DIM/NOTE, YB, UNITS, ADJ PRICE, RCNLD. Includes property details like DGF A 1.00 50 0.50 20 X 24.

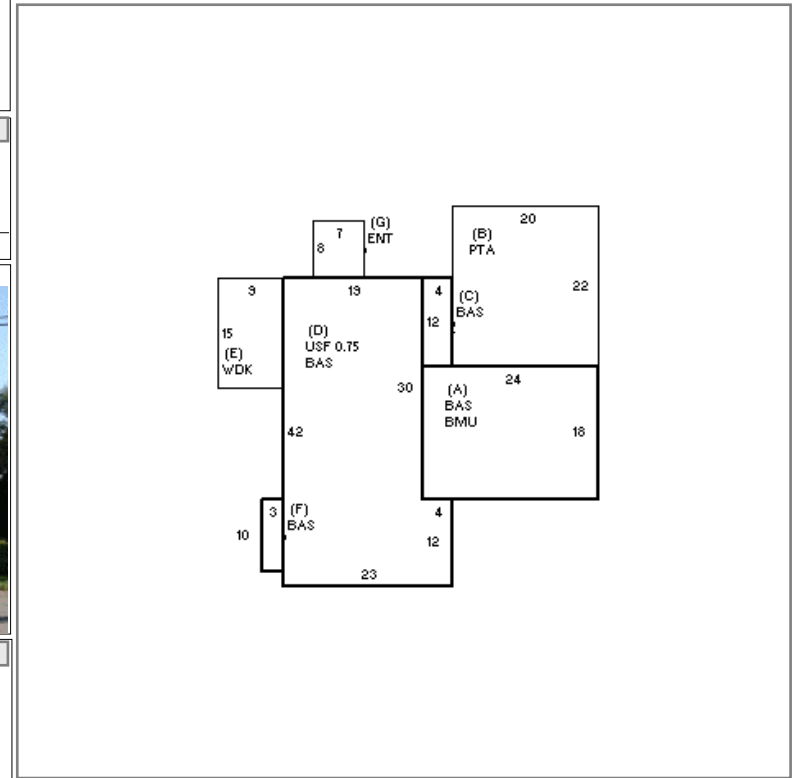


Table with columns: BUILDING, CD, ADJ, DESC, MEASURE, 9/10/2008, RJM. Includes building details like MODEL 1 RESIDENTIAL.

Table with columns: BLDG COMMENTS. Currently empty.

DETACHED

BUILDING

Large summary table with columns: YEAR BLT, NET AREA, \$NLA(RCN), CAPACITY, UNITS, ADJ, ELEMENT, CD, DESCRIPTION, ADJ, S, BAT, T, DESCRIPTION, UNITS, YB, ADJ PRICE, RCN, TOTAL RCN, 390,747, CONDITION ELEM, CD, EFF.YR/AGE, 1995 / 27, COND, FUNC, ECON, DEPR, RCNLD, \$297,000.