

Key: 1478

Town of Bourne - Fiscal Year 2024

12/18/2023 6:02 pm SEQ #: 1.481

LEGALS

Table with columns: CURRENT OWNER, PARCEL ID, LOCATION, TRANSFER HISTORY, DOS, T, SALE PRICE, BK-PG (Cert). Includes owner info for Jones John A & Sharon M Jones and parcel details for 7.3-55-0.

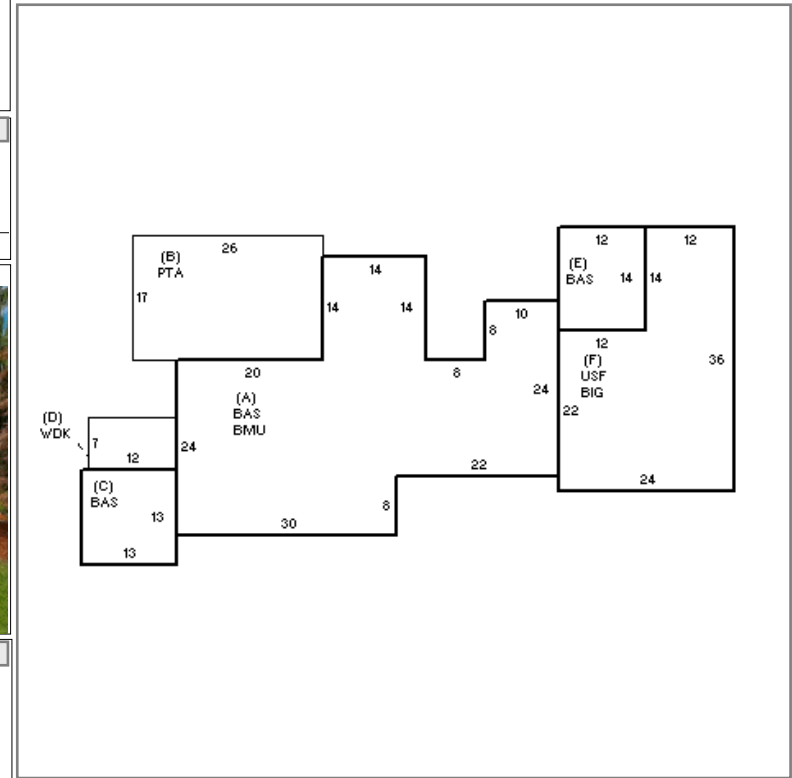
Table with columns: CLASS, CLASS%, DESCRIPTION, BN ID, BN, CARD. Includes payment history for 1010 SINGLE FAMILY with details on PMT NO, PMT DT, TY, DESC, AMOUNT, INSP, BY, 1st, %.

LAND

Table with columns: TOTAL, 15,682 SF, ZONING, 1, FRNT, 117, ASSESSED, CURRENT, PREVIOUS. Includes details on assessed values for Land, Building, Detached, and Other.

DETAILED

Table with columns: TY, QUAL, COND, DIM/NOTE, YB, UNITS, ADJ PRICE, RCNLD. Includes a photo of the property dated 05/08/2023.



BUILDING

Table with columns: BUILDING, CD, ADJ, DESC, MEASURE, 1/12/2022, NMP. Includes building details like Model, Style, Quality, Frame, Measure, List, and Review.

INDING

Large table with columns: YEAR BLT, SIZE ADJ, UNITS, ADJ, ELEMENT, CD, DESCRIPTION, ADJ, S, BAT, T, DESCRIPTION, UNITS, YB, ADJ PRICE, RCN, RCN, TOTAL RCN, 546,696, CONDITION ELEM, CD. Includes capacity, element details, and a summary table for RCNLD \$421,000.