

Key: 15753

Town of Bourne - Fiscal Year 2024

12/18/2023 6:02 pm SEQ #: 11.830

LEGAL LAND

Table with columns: CURRENT OWNER, PARCEL ID, LOCATION, TRANSFER HISTORY, DOS, T, SALE PRICE, BK-PG (Cert). Includes owner info for Sundquist Brian Etux and transfer history.

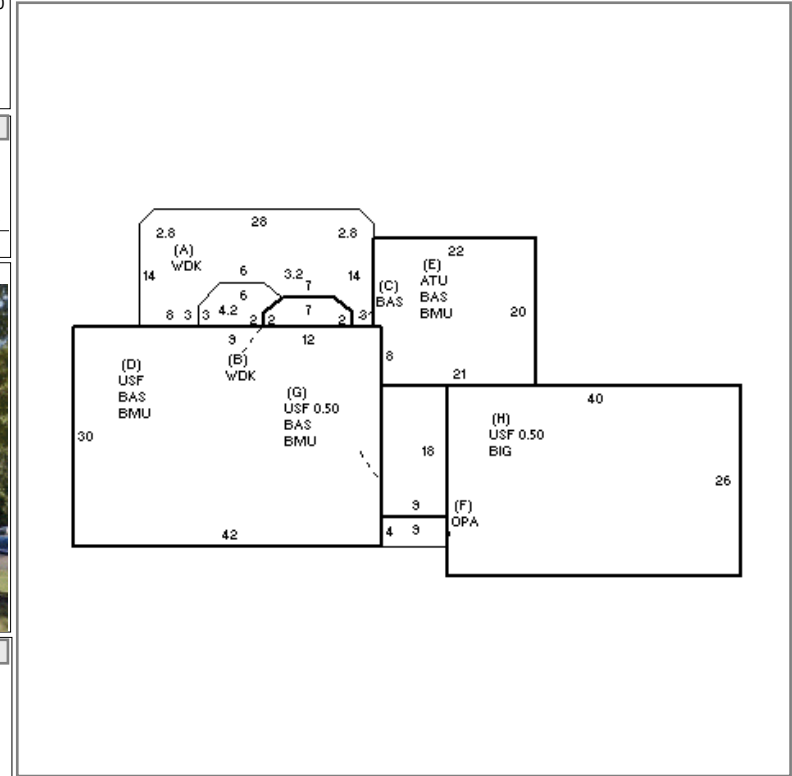
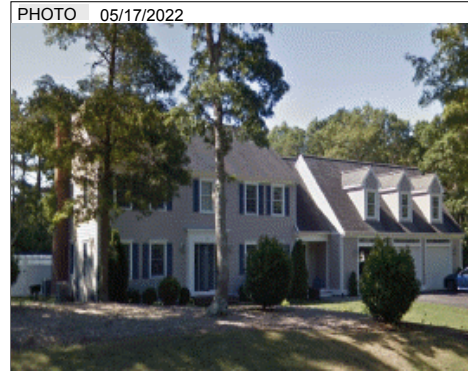
Table with columns: CLASS, CLASS%, DESCRIPTION, BN ID, BN, CARD. Includes a list of parcels with details like PMT NO, PMT DT, TY, DESC, AMOUNT, INSP, BY, 1st, %.

LEGAL LAND

Table with columns: TOTAL, AC/SF/UN, ZONING, FRNT, ASSESSED, CURRENT, PREVIOUS. Includes zoning info (FORMERLY PART OF MAP 31 PCL 28) and assessed values.

DETACHED

Table with columns: TY, QUAL, COND, DIM/NOTE, YB, UNITS, ADJ PRICE, RCNLD. Includes property characteristics like IPG, SHF, DIM/NOTE (18 X 40, 12X16).



BUILDING

Table with columns: BUILDING, CD, ADJ, DESC, MEASURE, 5/17/2022, RP. Includes building details like MODEL, STYLE, QUALITY, FRAME.

Table with column: BLDG COMMENTS. Currently empty.

BUILDING

Main table with columns: YEAR BLT, NET AREA, \$NLA(RCN), CAPACITY, UNITS, ADJ, ELEMENT, CD, DESCRIPTION, ADJ, S, BAT, T, DESCRIPTION, UNITS, YB, ADJ PRICE, RCN, TOTAL RCN, CONDITION ELEM, CD, EFF.YR/AGE, COND, FUNC, ECON, DEPR, RCNLD. Includes detailed building specifications and a summary of RCN values.