

Key: 3027

Town of Bourne - Fiscal Year 2024

12/18/2023 6:02 pm SEQ #: 3.064

LEGALS AND

Table with columns: CURRENT OWNER, PARCEL ID, LOCATION, TRANSFER HISTORY, DOS, SALE PRICE, BK-PG (Cert). Includes owner info for Jackson Natalie Shafer and transfer history.

Table with columns: CLASS, CLASS%, DESCRIPTION, BN ID, BN, CARD. Includes payment history for EXB-22-818.

Table with columns: CD, T, AC/SF/UN, Nbhd, Infil1, N Index, ADJ BASE, SAF, Topo, Lpi, VC, CREDIT AMT, ADJ VALUE. Includes zoning and assessed value information.

Table with columns: TY, QUAL, COND, DIM/NOTE, YB, UNITS, ADJ PRICE, RCNLD. Includes property characteristics and unit details.

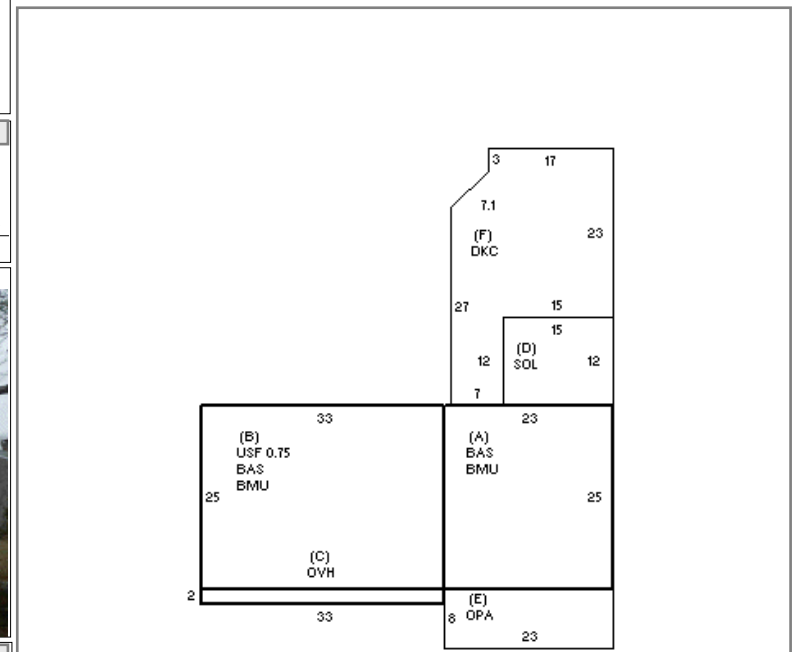


Table with columns: BUILDING, CD, ADJ, DESC, MEASURE, 4/6/2023, SL. Includes building details and measures.

Table with columns: BLDG COMMENTS. Includes text for building comments.

DETACHED

BUILDING

Large summary table with columns: YEAR BLT, NET AREA, \$NLA(RCN), CAPACITY, ELEMENT, CD, DESCRIPTION, ADJ, S, BAT, T, DESCRIPTION, UNITS, YB, ADJ PRICE, RCN, TOTAL RCN, 584.823, CONDITION ELEM, CD. Includes detailed unit and element breakdown.