

Key: 5956

Town of Bourne - Fiscal Year 2024

12/18/2023 6:02 pm SEQ #: 6.112

LEGAL LAND

Table with columns: CURRENT OWNER, PARCEL ID, LOCATION, TRANSFER HISTORY, DOS, T, SALE PRICE, BK-PG (Cert)

Table with columns: CLASS, CLASS%, DESCRIPTION, BN ID, BN, CARD, PMT NO, PMT DT, TY, DESC, AMOUNT, INSP, BY, 1st, %

Table with columns: CD, T, AC/SF/UN, Nbhd, Infl1, N Index, ADJ BASE, SAF, Topo, Lpi, VC, CREDIT AMT, ADJ VALUE

Table with columns: TOTAL, 41,003 SF, ZONING, 1, FRNT, 0, ASSESSED, CURRENT, PREVIOUS

Table with columns: TY, QUAL, COND, DIM/NOTE, YB, UNITS, ADJ PRICE, RCNLD

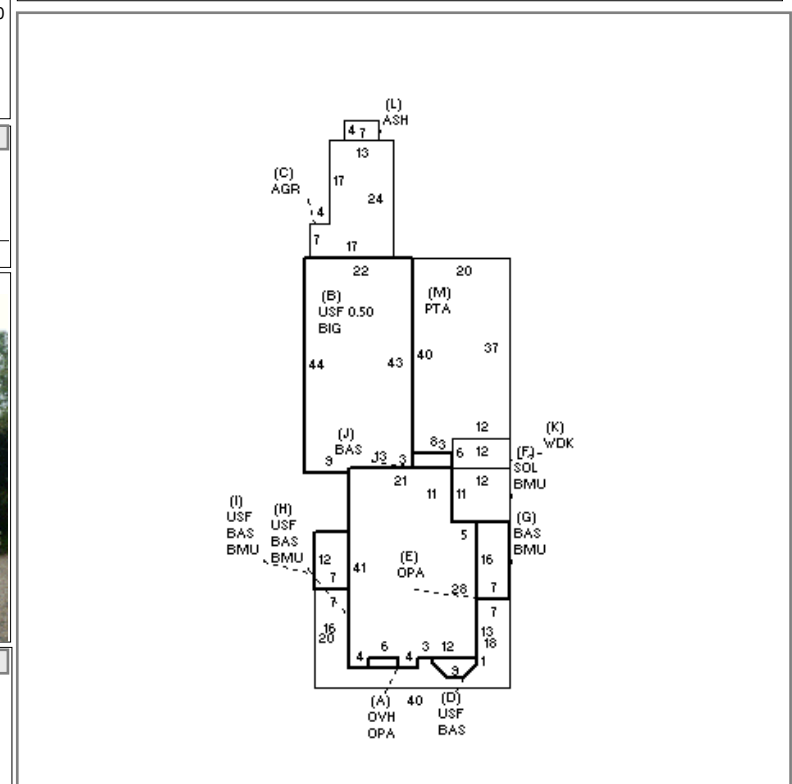


Table with columns: BUILDING, CD, ADJ, DESC, MEASURE, 7/18/2022, TL

Table with columns: BLDG COMMENTS

DETACHED

BUILDING

Table with columns: YEAR BLT, 1997, SIZE ADJ, 1.000, NET AREA, 2,798, DETAIL ADJ, 1.000, \$NLA(RCN), \$292, OVERALL, 1.180

Table with columns: ELEMENT, CD, DESCRIPTION, ADJ

Table with columns: S, BAT, T, DESCRIPTION, UNITS, YB, ADJ PRICE, RCN

Table with columns: TOTAL RCN, 818,315, CONDITION ELEM, CD, EFF.YR/AGE, 2000 / 22, COND, 19 19%, FUNC, 0, ECON, 0, DEPR, 19 % GD, 81, RCNLD, \$662,800