

Key: 6479

Town of Bourne - Fiscal Year 2024

12/18/2023 6:02 pm SEQ #: 6.638

LEGAL

Table with columns: CURRENT OWNER, PARCEL ID, LOCATION, TRANSFER HISTORY, DOS, T, SALE PRICE, BK-PG (Cert). Includes owner CHERA JANE E and parcel 30.4-159-1.

Table with columns: CLASS, CLASS%, DESCRIPTION, BN ID, BN, CARD. Includes details for SINGLE FAMILY class and a row for ALT/RENO with amount 100.

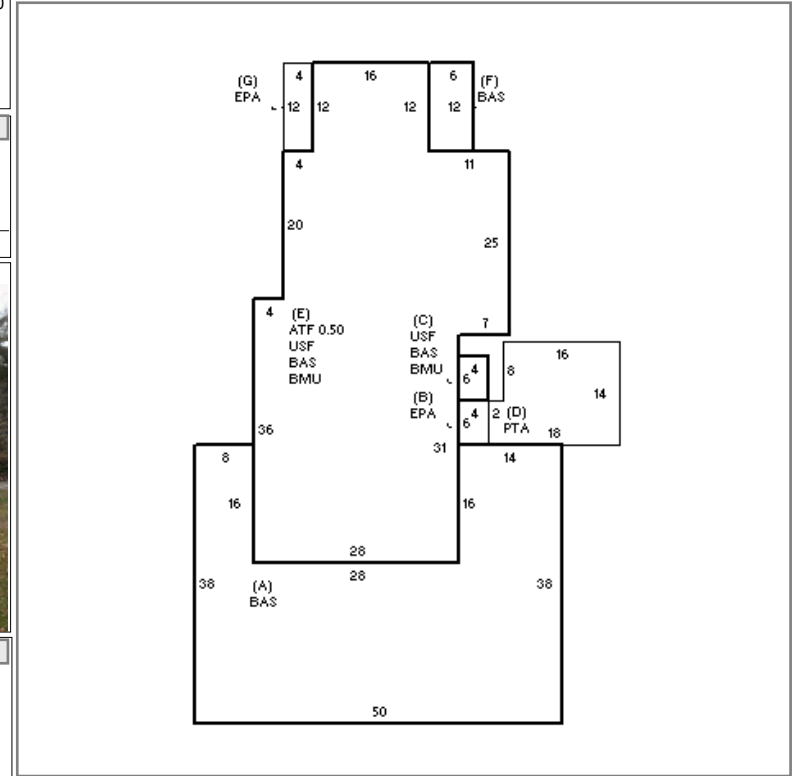
LAND

Table with columns: CD, T, AC/SF/UN, Nbhd, Infl1, N Index, ADJ BASE, SAF, Topo, Lpi, VC, CREDIT AMT, ADJ VALUE. Includes rows for 100 and 300 acreage.

Table with columns: TOTAL, 1.320 Acres, ZONING, 1, FRNT, 0, ASSESSED, CURRENT, PREVIOUS. Includes sub-table for MO BCH zoning and assessed values.

DETACHED

Table with columns: TY, QUAL, COND, DIM/NOTE, YB, UNITS, ADJ PRICE, RCNLD. Includes a photo of the property dated 08/02/2018.



BUILDING

Table with columns: BUILDING, CD, ADJ, DESC, MEASURE, 4/10/2018, BC. Includes details for RESIDENTIAL CONVENTIONAL building.

Table with columns: BLDG COMMENTS.

INDING

Large table with columns: YEAR BLT, SIZE ADJ, 0.975, ELEMENT, CD, DESCRIPTION, ADJ, S, BAT, T, DESCRIPTION, UNITS, YB, ADJ PRICE, RCN, RCN, TOTAL RCN, 929.884, CONDITION ELEM, CD. Includes detailed breakdown of building elements and costs.