

Key: 6559

Town of Bourne - Fiscal Year 2024

12/18/2023 6:02 pm SEQ #: 6.722

LEGAL LAND

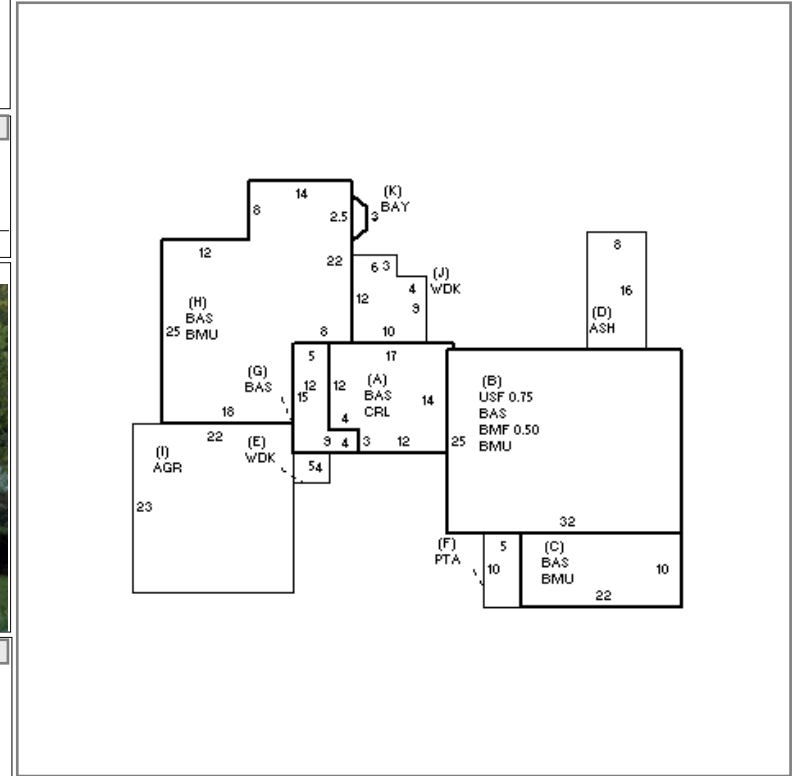
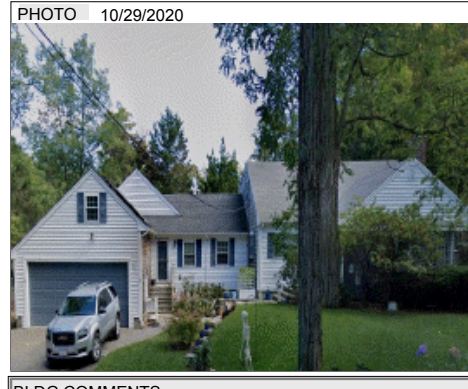
Table with columns: CURRENT OWNER, PARCEL ID, LOCATION, TRANSFER HISTORY, DOS, T, SALE PRICE, BK-PG (Cert). Includes owner DIETRICH GRETCHEN SALLY and parcel 30.4-248-0.

Table with columns: CLASS, CLASS%, DESCRIPTION, BN ID, BN, CARD. Includes details for SINGLE FAMILY class and various assessment items like SOLAR, ADDITIONS, ALT/RENO, FENCE.

Table with columns: CD, T, AC/SF/UN, Nbhd, Infl1, N Index, ADJ BASE, SAF, Topo, Lpi, VC, CREDIT AMT, ADJ VALUE. Includes values for 100 S, 12,350 9, etc.

Table with columns: TOTAL, ZONING, FRNT, ASSESSED, CURRENT, PREVIOUS. Includes values for 12,371 SF, ZONING 1, and assessed values of 682,600.

Table with columns: TY, QUAL, COND, DIM/NOTE, YB, UNITS, ADJ PRICE, RCNLD. Includes a photo of the property at 10/29/2020.



DETACHED

Table with columns: BUILDING, CD, ADJ, DESC, MEASURE, LIST, REVIEW. Includes details for RESIDENTIAL building type and quality.

Table with columns: BLDG COMMENTS. Includes text: BLDG COMMENTS

BU I L D I N G

Table with columns: YEAR BLT, SIZE ADJ, NET AREA, \$NLA(RCN), CAPACITY, UNITS, ADJ. Includes values for 1956, 2,619, and capacity details.

Large table with columns: ELEMENT, CD, DESCRIPTION, ADJ, S, BAT, T, DESCRIPTION, UNITS, YB, ADJ PRICE, RCN, TOTAL RCN, CONDITION ELEM, CD. Includes detailed breakdown of building elements like FOUNDATION, ROOF SHAPE, FLOOR COVER, etc.