

Key: 7954

Town of Bourne - Fiscal Year 2024

12/18/2023 6:02 pm SEQ #: 8.116

LEGAL LAND

Table with columns: CURRENT OWNER, PARCEL ID, LOCATION, TRANSFER HISTORY, DOS, T, SALE PRICE, BK-PG (Cert). Includes owner info for Besette Kyle C & Lauren Egan and transfer history.

Table with columns: CLASS, CLASS%, DESCRIPTION, BN ID, BN, CARD. Includes payment history for PMT NO, PMT DT, TY, DESC, AMOUNT, INSP, BY, 1st, %.

Table with columns: TOTAL, ZONING, FRNT, ASSESSED, CURRENT, PREVIOUS. Includes details for Nbdh, Inf1, N\_Index and assessed values for Land, Building, Detached, Other.

Table with columns: TY, QUAL, COND, DIM/NOTE, YB, UNITS, ADJ PRICE, RCNLD. Includes photo reference and building details.

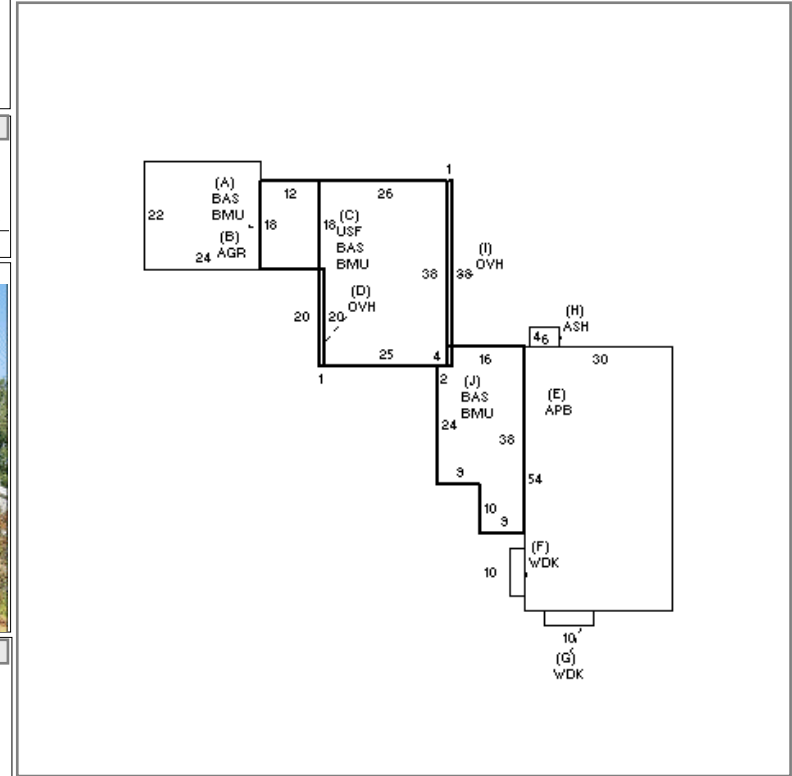
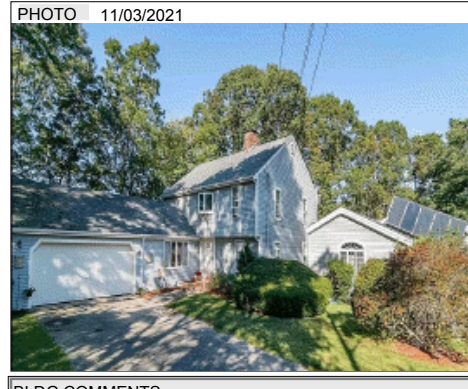


Table with columns: BUILDING, CD, ADJ, DESC, MEASURE, 2/9/2022, TL. Includes model, style, quality, and frame details.

Table with columns: BLDG COMMENTS. Currently empty.

DETACHED

BUILDING

Large summary table with columns: YEAR BLT, SIZE ADJ, UNITS, ADJ, ELEMENT, CD, DESCRIPTION, ADJ, S, BAT, T, DESCRIPTION, UNITS, YB, ADJ PRICE, RCN, TOTAL RCN, CONDITION ELEM, CD, EFF. YR/AGE, COND, FUNC, ECON, DEPR, RCNLD. Includes capacity, foundation, roof, floor, and building details.