

Key: 9487

Town of Bourne - Fiscal Year 2024

12/18/2023 6:02 pm SEQ #: 9.708

LEGAL

Table with columns: CURRENT OWNER, PARCEL ID, LOCATION, TRANSFER HISTORY, DOS, T, SALE PRICE, BK-PG (Cert). Includes owner name: PRIMMERMAN CHARLES A & CHRISTA MARIA PRIMMERMAN.

Table with columns: CLASS, CLASS%, DESCRIPTION, BN ID, BN, CARD. Includes multiple dwelling information and assessment details.

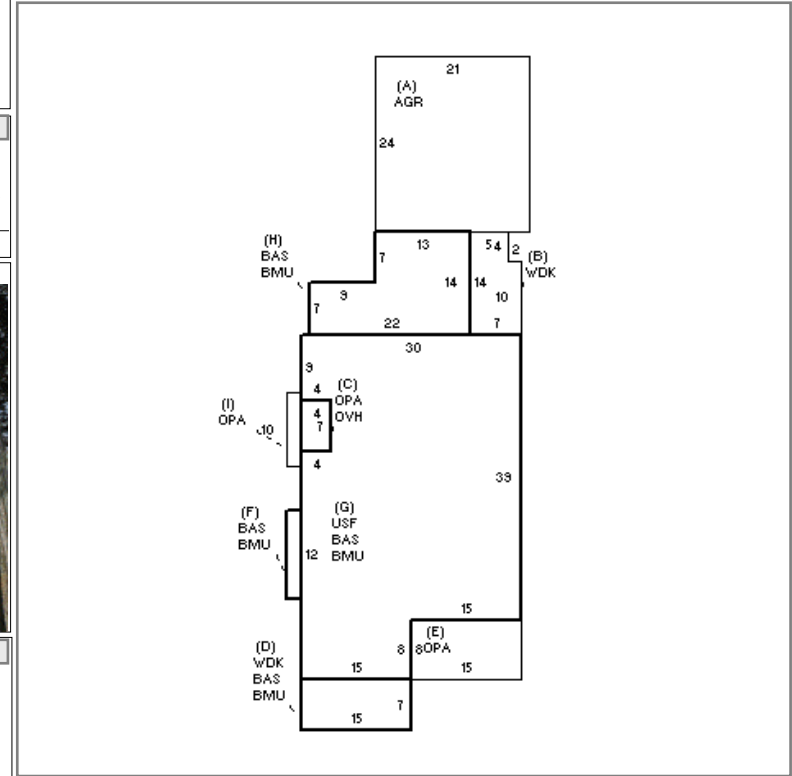
LAND

Table with columns: CD, T, AC/SF/UN, Nbhd, Infl1, N Index, ADJ BASE, SAF, Topo, Lpi, VC, CREDIT AMT, ADJ VALUE.

Table with columns: TOTAL, ZONING, FRNT, ASSESSED, CURRENT, PREVIOUS. Includes zoning details: BEAUTIFUL VIEWS-ACROSS STREET FROM TOWN.

DETACHED

Table with columns: TY, QUAL, COND, DIM/NOTE, YB, UNITS, ADJ PRICE, RCNLD. Includes a photo of the property.



BUILDING

Table with columns: BUILDING, CD, ADJ, DESC, MEASURE, LIST, REVIEW. Includes building details like MODEL, STYLE, QUALITY, FRAME.

Table with columns: BLDG COMMENTS.

INDING

Main table with columns: YEAR BLT, NET AREA, \$NLA(RCN), CAPACITY, UNITS, ADJ, ELEMENT, CD, DESCRIPTION, ADJ, S, BAT, T, DESCRIPTION, UNITS, YB, ADJ PRICE, RCN, TOTAL RCN, CONDITION ELEM, CD. Includes detailed building specifications and a summary of RCN values.