

Key: 3506

Town of BREWSTER - Fiscal Year 2025

9/17/2024 2:15 pm SEQ #: 3.717

LEGAL

LAND

DETACHED

BUILDING

Table with columns: CURRENT OWNER (KRAMER ANDREA & ROACH TIMOTHY), PARCEL ID (88-24-0), LOCATION (28 SOUTH POND DRIVE), TRANSFER HISTORY, DOS, T, SALE PRICE, BK-PG (Cert), and various assessment metrics like ADJ BASE, SAF, Topo, Lpi, VC, CREDIT AMT, ADJ VALUE.

Table with columns: CLASS (1010), CLASS% (100), DESCRIPTION (SINGLE FAMILY), BN ID, BN (1), CARD (1 of 1), and a detailed payment history table with columns: PMT NO, PMT DT, TY, DESC, AMOUNT, INSP, BY, 1st, %.

Summary table with columns: TOTAL (25,074 SF), ZONING (RM), FRNT (0), ASSESSED (LAND, BUILDING, DETACHED, OTHER), CURRENT (268,500, 564,900, 1,700, 0), PREVIOUS (253,300, 539,600, 1,700, 0), TOTAL (835,100, 794,600).

Table with columns: TY (SHF), QUAL (A), COND (1.00, 20, 0.80), DIM/NOTE (8X12), YB (2006), UNITS (96), ADJ PRICE (22.01), RCNLD (1,700).

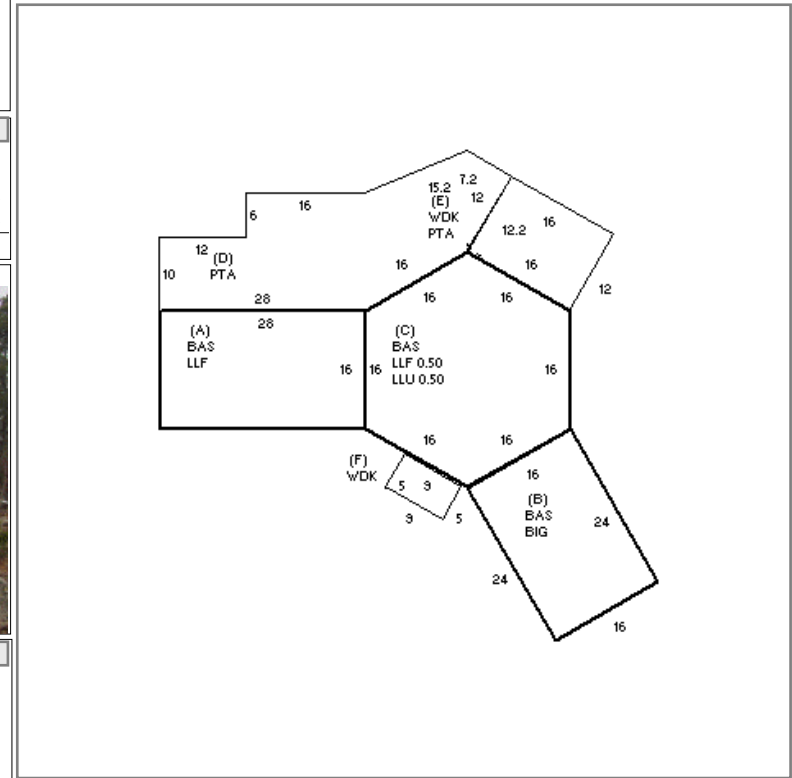


Table with columns: BUILDING (MODEL, STYLE, QUALITY, FRAME), CD, ADJ, DESC (RESIDENTIAL, CONTEMPOR, AVG, WD FRAME), MEASURE, LIST, REVIEW, and TCK (JH, EMZ).

Table with columns: YEAR BLT (1976), SIZE ADJ (1.000), NET AREA (2,282), \$NLA(RCN) (\$285), CAPACITY, UNITS, ADJ, and various room counts like STORIES, ROOMS, BEDROOMS, BATHROOMS, etc.

Table with columns: ELEMENT, CD, DESCRIPTION, ADJ, S, BAT, T, and a list of building components like FOUNDATION, EXT COVER, ROOF SHAPE, ROOF COVER, FLOOR COVER, INT FINISH, HEATING/COOL, FUEL SOURCE.

Table with columns: S, BAT, T, DESCRIPTION, UNITS, YB, ADJ PRICE, RCN, and a list of building components like LLOWER LEVEL FIN, L BASE AREA, N BUILT-IN GARAGE, N LOWER LEVEL UNF, N PATIO, N PATIO, N WOOD DECK, O FPL 1S 1OP, O GENERATOR, O GAS FIREPLACE, O XTRA KITCHEN, O OUTDOOR SHOWER.

Table with columns: TOTAL RCN (649,319), CONDITION ELEM, CD, EFF. YR/AGE (2007 / 16), COND (13 13%), FUNC (0), ECON (0), DEPR (13 % GD 87), RCNLD (\$564,900).