

Key: 1009

Town of CHATHAM - Fiscal Year 2024

9/7/2023 9:38 am SEQ #: 1.104

LEGALS

Table with columns: CURRENT OWNER, PARCEL ID, LOCATION, TRANSFER HISTORY, DOS, T, SALE PRICE, BK-PG (Cert). Includes owner info for Woodland Way Nominee Trust and transfer history.

Table with columns: CLASS, CLASS%, DESCRIPTION, BN ID, BN, CARD. Lists various permits and inspections including SH.MTL/FHAIR, New Construc, Demolitions, and SPECIAL PERM.

Table with columns: CD, T, AC/SF/UN, Nbh, Inf1, Inf2, ADJ BASE, SAF, Inf3, Lpi, VC, CREDIT AMT, ADJ VALUE. Includes totals for assessed, current, and previous values.

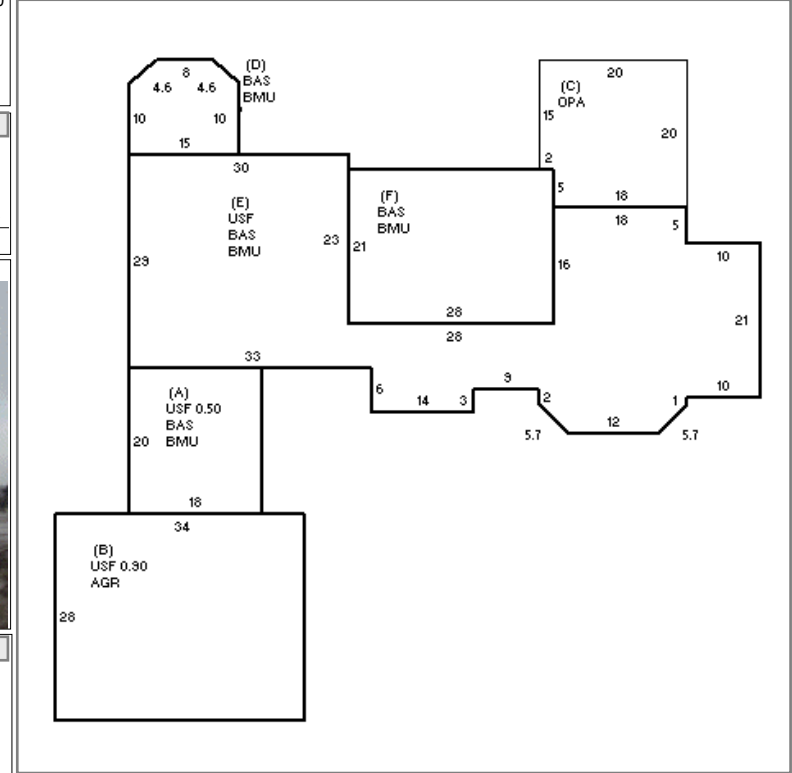
Table with columns: ZONING, FRNT, ASSESSED, CURRENT, PREVIOUS. Includes zoning details (R40) and assessed values for land, building, detached, and other.

Table with columns: TY, QUAL, COND, DIM/NOTE, YB, UNITS, ADJ PRICE, RCNLD. Includes building quality and condition details.

Table with columns: BUILDING, CD, ADJ, DESC, MEASURE, 3/1/2023, NF. Includes building model, style, quality, and frame details.



BLDG COMMENTS: BMF=FAM RM/GYM/SAUNA/WINE CLOSET/HALF BATH INTERIOR ESTIMATED PER PLANS 5/12/2023



DETAILED

BUILDING

UNIT

Table with columns: ELEMENT, CD, DESCRIPTION, ADJ, S, BAT, T, DESCRIPTION, UNITS, YB, ADJ PRICE, RCN, TOTAL RCN, CONDITION, ELEM, CD. Includes detailed building element breakdown and capacity information.