

Key: 1331

Town of CHATHAM - Fiscal Year 2024

9/7/2023 9:38 am SEQ #: 1.450

LEGAL LAND

Table with columns: CURRENT OWNER, PARCEL ID, LOCATION, TRANSFER HISTORY, DOS, T, SALE PRICE, BK-PG (Cert). Includes owner info for 34 COURT STREET LLC and transfer history for 121-24E-H5.

Table with columns: CLASS, CLASS%, DESCRIPTION, BN ID, BN, CARD. Includes a list of transactions for SINGLE FAMILY properties with details on PMT NO, PMT DT, TY, DESC, AMOUNT, INSP, BY, 1st, %.

LAND

Table with columns: CD, T, AC/SF/UN, Nbhd, Infil1, Infil2, ADJ BASE, SAF, Infil3, Lpi, VC, CREDIT AMT, ADJ VALUE. Includes summary rows for TOTAL and assessed values.

Table with columns: ZONING, R40, FRNT, ASSESSED, CURRENT, PREVIOUS. Includes details for NBHD MID CHATHAM and assessed values for LAND, BUILDING, DETACHED, OTHER.

Table with columns: TY, QUAL, COND, DIM/NOTE, YB, UNITS, ADJ PRICE, RCNLD. Includes property details for IPC, PTD, and other units.

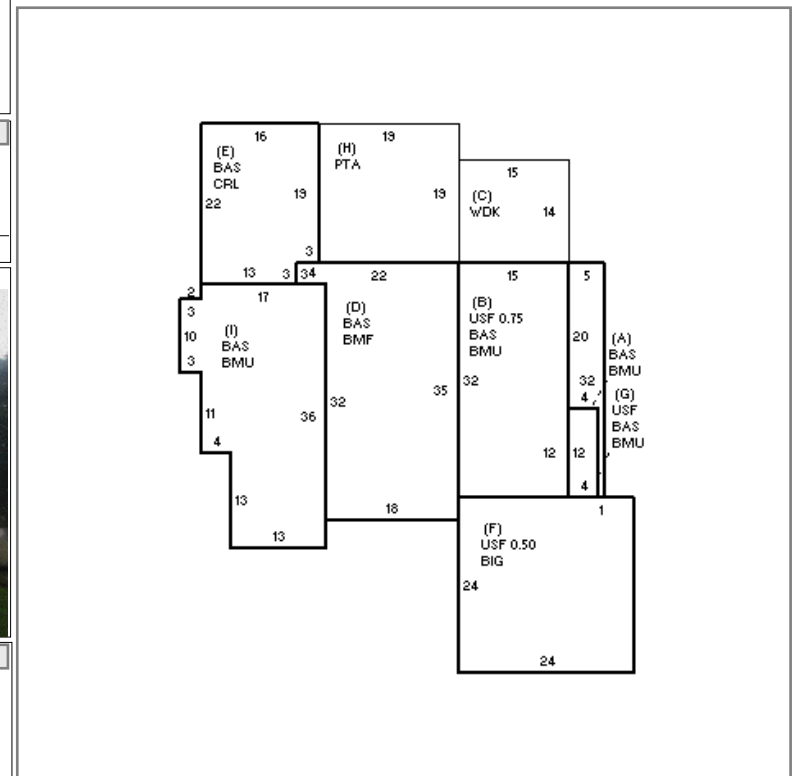


Table with columns: BUILDING, CD, ADJ, DESC, MEASURE, 11/2/2021, NF. Includes BLDG COMMENTS: PULL DOWN STAIRS TO ATTIC; BMF=FAM RM.

DETACHED

BU I L D I N G

Large summary table with columns: YEAR BLT, NET AREA, \$NLA(RCN), CAPACITY, UNITS, ADJ, ELEMENT, CD, DESCRIPTION, ADJ, S, BAT, T, DESCRIPTION, UNITS, YB, ADJ PRICE, RCN, TOTAL RCN, 1,402,231. Includes detailed breakdown of building elements and RCN values.