

Key: 3892

Town of SCITUATE - Fiscal Year 2024

10/18/2023 5:31 pm SEQ #: 3.711

LEGALS AND

Table with columns: CURRENT OWNER, PARCEL ID, LOCATION, TRANSFER HISTORY, DOS, T, SALE PRICE, BK-PG (Cert). Includes owner info for Coleman Charles Patrick Tr & Luann Donna Tr at 6 Second Av, Scituate, MA 02066.

Table with columns: CLASS, CLASS%, DESCRIPTION, BN ID, BN, CARD. Includes payment history for alterations with PMT NO, PMT DT, TY, DESC, AMOUNT, INSP, BY, 1st, %.

Table with columns: CD, T, AC/SF/UN, Ngh, Inf1, Inf2, ADJ BASE, SAF, Inf3, Lpi, VC, CREDIT AMT, ADJ VALUE. Includes zoning and assessed values.

Table with columns: TY, QUAL, COND, DIM/NOTE, YB, UNITS, ADJ PRICE, RCNLD. Includes property characteristics like SHF, IPG, SHF.

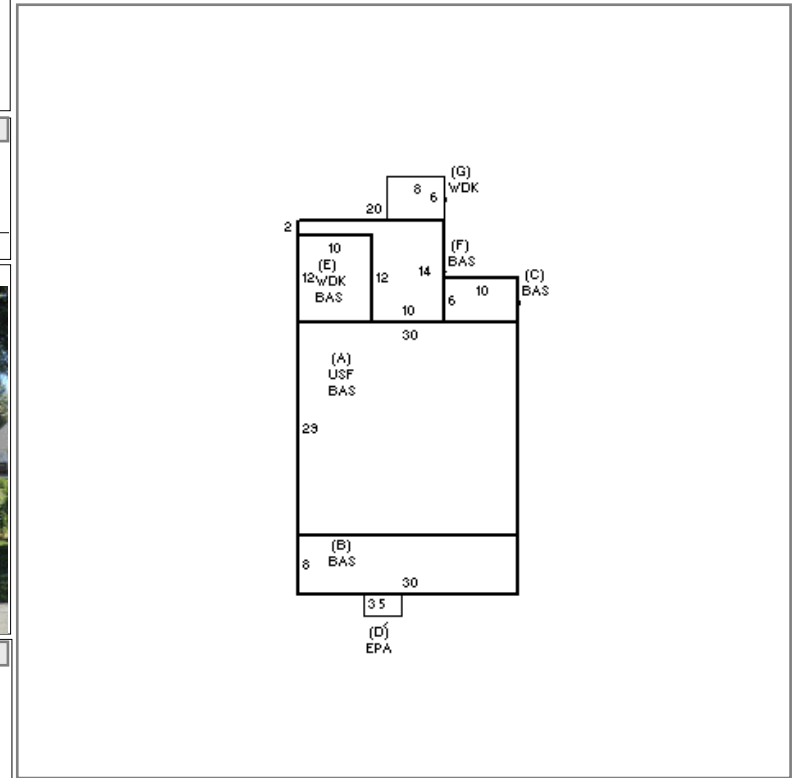


Table with columns: BUILDING, CD, ADJ, DESC, MEASURE, 6/17/2020, JD. Includes building details like MODEL, STYLE, QUALITY, FRAME.

Table with columns: BLDG COMMENTS. Includes text: FY12 FR- COLONIAL TO CONV.

DETACHED

BUILDING

Large summary table with columns: YEAR BLT, NET AREA, \$NLA(RCN), CAPACITY, UNITS, ADJ, ELEMENT, CD, DESCRIPTION, ADJ, S, BAT, T, DESCRIPTION, UNITS, YB, ADJ PRICE, RCN, TOTAL RCN, 561,524, CONDITION ELEM, CD, EFF.YR/AGE, 1984 / 38, COND, FUNC, ECON, DEPR, 26 % GD, 74, RCNLD, \$415,500.